

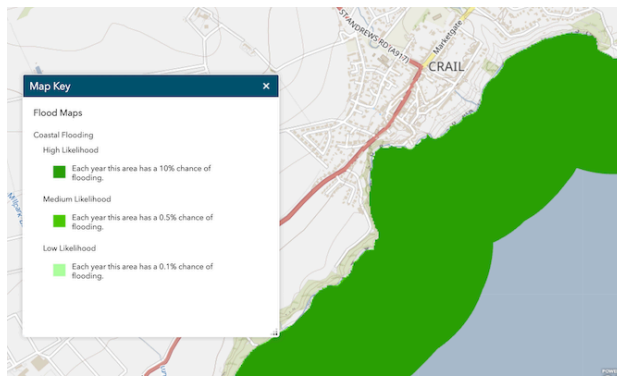
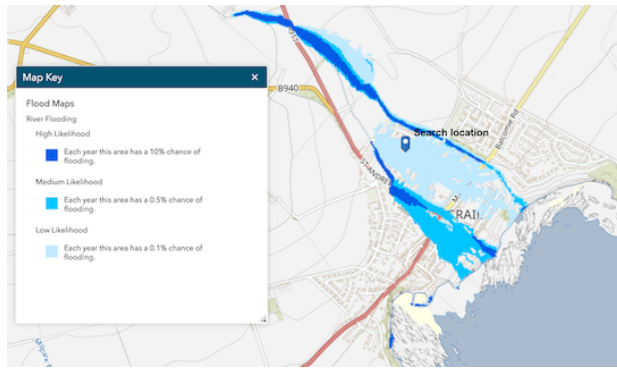


CRAIL MATTERS

Incorporating The Kingsbarns Eagle



5 APRIL ISSUE NO. 352 FREE - DONATIONS WELCOME -
SUGGESTED DONATION £2.00
WWW.CRAILMATTERS.COM



Scottish Environmental Protection Agency (SEPA)

SEPA is conducting a consultation on Potential Vulnerable Areas (PVAs) for flooding risk to protect communities from future impacts of flooding. The number of homes, businesses and services at risk across Scotland is projected to increase by around 40% by the 2080s due to climate change. PVAs are areas where significant flood risk exists now or is likely to occur in the future and are used to identify locations where a partnership approach may be required to resolve widespread and often complex flooding issues. They inform Scotland's Flood Risk Management (FRM) Plans and Local Flood Risk Management Plans and become the focus of FRM actions, helping responsible authorities to prioritise investment and coordinate actions to reduce the impacts of flooding on communities.

If you wish to take part in this consultation, go to <https://link.eastne.uk/sepa>

The maps show current river and coastal flooding risks for Crail (Maps credit SEPA).

Coastal Path

Large gaps have now appeared on the surface of coastal path from Roome Bay below Downie Terrace. Along with other damage further along the path, it seems likely that the scale of the problem will grow. Warning signs have been removed, and this has been reported to Fife Council and the Fife Coastal and Countryside Trust (FCCT).

The path is not part of the official Fife Coastal Path (FCP) which diverts from Roome Bay through the village. At various times over the years, both Fife Council and FCCT have undertaken work on it when funds were available, but neither seem to have any formal responsibility for its maintenance. There is some uncertainty about ownership of the path, but it seems likely the land affected belongs to adjacent multiple owners; if this is the case then the formal responsibility is on them to undertake repairs. With seas getting rougher combined with lack of maintenance the matter is only going to get worse and once the wall fails gardens will start to erode.

The Community Council have considered this, and whilst no formal estimates have been sought, the cost of repairs are likely to fall into the hundreds of thousands pounds area - the scale of the work and problems of access complicate the work required. In the absence of any remedial action, the path will inevitably be closed, and Crail will lose an important tourist asset (as well as a well loved walk). A meeting between the various agencies involved (including affected landowners) would seem advisable. (Photo credit Colin Morrison)

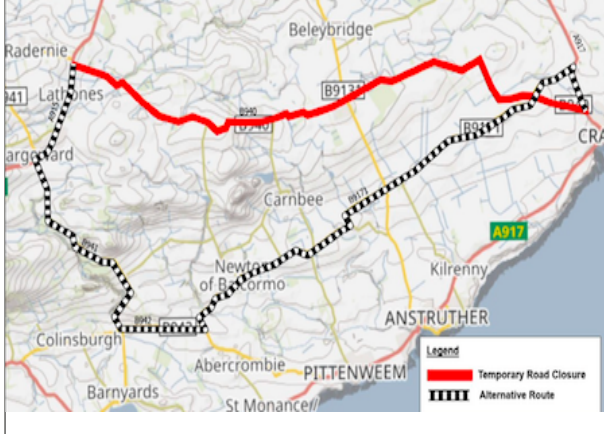


Lost House Key

On Saturday 30 March, a house key attached to a blue SWRI (Scottish Women's Rural Institute) key ring was lost in Crail. If you can assist, please call 01333 451798 or, email Crail Matters at crailmatters@gmail.com

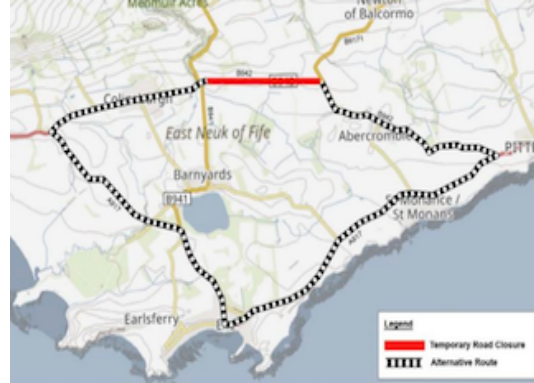
Temporary Road Closure B940

Temporary Road Closure B940, from A915 Higham Toll to A917 Crail 01/04/24 at 00.01hrs to 26/04/24 at 23.59hrs to allow carriageway resurfacing works to be carried out in safety. The alternative route for through vehicular traffic is via A915 Largoward, B941, B942 Colinsburgh, B9171 and A917



Temporary Road Closure B942 Easter Pitcorthie

The alternative route for through vehicular traffic is via B942 Colinsburgh and A917 Elie & St Monans from 01/04/24 at 07.00hrs to 03/05/24 at 23.59hrs, or until earlier completion of the works, to allow carriageway resurfacing works to be carried out in safety.



Police Scotland Report

Crail

26 calls to the police, 3 crimes recorded.

Kingsbarns

7 calls to the police, 0 crimes recorded.



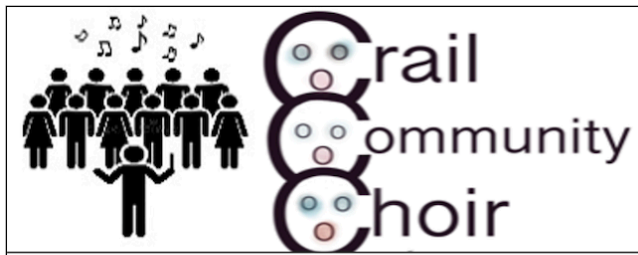
ROAD SAFETY - COMMUNITY SPEEDWATCH

Some positive news to share in relation to Community Speed Watch. Police are awaiting confirmation from Community Councils that the Community Speedwatch Scheme is to come under their remit. Once this has been confirmed with Police and Risk Management at Fife Council, we will be in a place to start the scheme again after 31st March, when the lighter evenings commence. At present we have only 1 volunteer within the East Neuk.

Community Speed Watch involves local resident volunteers being deployed on our roads with speed detection devices to provide a visible presence to deter and identify speeding motorists in hot-spot areas. If you know anyone who would like to become a volunteer, please email the community email box for further details (eastneuklandwardCPT@scotland.police.uk)

Helicopter Balcomie area

A helicopter was heard and seen by many Crail residents on Friday 29th around 1100pm hovering over the Dorward Drive and Roome Bay area. Police Scotland report that Robin Hogwood, 66, who was last seen in Crail around 1.45pm and was reported missing, has been traced safe and well. They thank everyone who shared and responded to their appeal.



SPRING 2024 rehearsals in Crail Church Hall

MONDAY 8 th	April 7.30
MONDAY 15 th	April 7.30
MONDAY 22 nd	April 7.30
MONDAY 29 th	April 7.30
MONDAY 6 th	May 7.30
MONDAY 13 th	May 7.30
MONDAY 20 th	May 7.30
MONDAY 27 th	May 7.00 (Church)

FRIDAY 31st CONCERT (7.30) in CHURCH

A new season will start on 26th August

Crail Community Partnership AGM

At the annual AGM of Crail Community Partnership, held 2 April, Will Cresswell and Max Taylor were re-elected as Trustees, Karen Vaughan and Neil McKay were elected as Trustees, and John Freeth and Manuela Calchinio-Smith were Co-opted. Thanks were offered for the work of Shields Henderson and Chris Broome who retired as Trustees. The accounts were formally presented and accepted by the meeting, and the very positive developments in the Community Hall were noted, as were ambitious plans for the future.

On conclusion of the meeting, Will Cresswell gave a short review of the work done at Kilminning, noting the very considerable achievements in the development of the area. This presentation was extremely well received.

The Democratic Deficit and Crail

In contemporary political debate, the term "democratic deficit" refers to a gap between the democratic ideals a society strives for and the reality of how its political institutions operate. We live in a democracy, are consulted on issues (including representation), but frequently feel our views are not taken seriously in decision making – that gap between expressed views and decision taken by local or national government is what the 'democratic deficit' refers to. That deficit can extend to the actions of large companies and organisations where they provide services for 'the public good'.



Is this relevant for Crail and to our lives?

After all, we are a small part of a bigger whole (Fife) itself a small part of an even bigger whole (Scotland) all of which have representative mechanism (County Council, Scottish Parliament) that allegedly reflect and represent our views. But it is precisely because we, the recipients of decisions made by others, all too often experience the gap between what these organisations do, and what the claim in our name to represent, that it is relevant to us.

The essence of a democratic deficit can be expressed in several ways:

- Lack of Transparency and Accountability: When the decision-making processes of political institutions or organisations are opaque, it undermines the trust and confidence of the citizenry.
- Inadequate Citizen Participation: A cornerstone of democracy is the active engagement of its citizens. A deficit arises when there is a disconnect between the government and the governed, leading to a sense of disempowerment among the populace.
- Technocratic Governance: Over-reliance on technical or specialised decision-making can alienate the general public, who may feel their voices are being overshadowed by experts.

In Crail (and in most communities), we experience all of this. At a local level, whilst there are statutory mechanisms to consult (such as the Community Council), decisions taken there are advisory, and actual decisions are taken elsewhere either in arenas where the community has no direct input (as in Fife Council Committees) and where we do not see how decisions are made, or decisions are taken by Fife Council officers without reference to community views (a form of technocratic government). We elect Fife Councillors to represent our views, but mechanisms of accountability other than through the Community Council do not exist outside of elections, which given that they are spaced out by 4 or 5 years simply do not offer adequate opportunity to express views and to see those views reflected in policy. And we all too often see decisions by Fife Council taken without community consultation or even referencing.

The gap between communities and decision makers are not of course only confined to local or national government. Large organisations on whom we depend for services are often distant from communities in which they work, and accessing community views all too often seems to be a chore limiting what they see as their freedom of action. We have seen this recently in Tollbooth Wynd, where Scottish Power have constructed a substation without reference to planning requirements (it is in the conservation area) and local views. Crail Matters will do all it can to redress this affront, but enforcement of community as opposed to organisational or institutional views is difficult, and the power imbalance is very obvious.

Addressing the democratic deficit requires first a recognition that this is a significant weakness in the way we organise public life. This necessarily requires our public representatives to acknowledge that weakness and to acknowledge their part in it. Given that, it will then require a multifaceted approach, including enhancing the transparency of institutions, fostering greater public engagement in political processes, and ensuring that decision-making is both responsive and accountable to the electorate and community. As the concept of democratic deficit continues to evolve, it remains a critical barometer for assessing the health and legitimacy of our democratic systems. A vital first step to initiate change is moving decisions away from top-down large institutions, to more locally and community-based structures. Are our institution and public representatives sensitive and mature enough to recognise this?

ST ANDREWS
REPAIR & ADVICE CAFE

SCAN QR CODE FOR MORE DETAILS

2nd Wednesday of the month
6 - 8:30pm

repairs: electricals, clocks, watches musical instruments, clothes
advice: shoe/bag repairs, energy efficiency, IT devices, renewables

"repairs & advice varies monthly, as does venue - check website for details"

OPEN TO ALL, FREE, TEA & BICS TO ENJOY

transition university of at andrews

Please book electrical repairs via our website (transitionsta.org/events) or via the QR code above

Know about Crail's Organisations

CRAIL FOLK CLUB , FROM THE BEGINNING

The Crail Folk Club was started in 1987. An advert appeared in a local shop asking for anyone interested in starting a Folk Club. Jill Saunderson and multi-instrumentalist Bernie Precious, now sunning himself near Bergerac in France, took it from there. The first evening's guests were locals Sheena Wellington and Jim Watt, which was a great start for the club. Sheena has been back many times since, and as well as opening the club she sang at the first session of the Scottish Parliament.

The club has had many venues including the Balcomie Links Hotel, the Golf Hotel, The Legion Hall, The Town Hall and post COVID the Community Hall. We have had artists from around the globe including the USA, Canada, Australia and much of Europe, as well as all parts of the UK and Ireland. We have had too many fantastic nights to mention including a great night with Hamish Imlach, Jethro Tull's Martin Allcock (how ridiculous it is a folk club!), the legendary Tom Paxton, Eric Bogle, Michael Marra, Rab Noakes, Barbara Dickson, The Sangsters, Siobhan Miller, Outside Track, Richard Digance, Eddi Reader, Tannerhill Weavers, Archie Fisher, Miarearad Green and Anna Massie, and the Pooxies. It should be apparent that we don't stick to any particular style. Considering we don't have much in the way of committee meetings we always reach a consensus – democracy in action.

To get a booking at the club the artists must be either excellent singers or musicians or better still both. Then, and this is the key, they must be able to entertain as well. We nearly always succeed. We are very lucky to have been given the opportunity to use the Community Hall as it has enabled us to be more ambitious – more space, a great sound system, flexible staging.

This year, and in April particularly, we have been even more ambitious, and particularly on April 18 Steeleye Span's Maddy Prior with her Forgotten Lands band. The East Neuk and its surrounds is blessed with lots of talented musicians and singers who come together for our regular Singers' Nights – variety, quality and a fun night with anything up to 15 or so performers. All you need to know and tickets from www.craifolkclub.org.uk We get great support from the local community, visitors and sometimes people travelling a distance for particular shows. We aren't going anywhere anytime soon so we look forward to your continued support.



Waid Library Community Engagement



We are looking at our current library resources and what the needs of the local Community are.

A drop-in session will be held on Tuesday the 9th of April, between 10am & 2pm, to provide an opportunity for you to share your views.



Did you remember to put your clock forward last weekend? ... to autumn? Gordon Baxter

Museum Matters

Greetings from your Crail Museum correspondent! I hope you all enjoyed the wonderful wee taster of proper Spring weather over the holiday weekend, and I hope the present return to the other kind of dreitch Spring weather hasn't got you feeling too down! In case you might need some cheering up, I'm here with some hopeful and interesting news from the Museum.

As reported in my last article, we were coming up to the annual Volunteer's Tea. And so it came about with a goodly number of folks attending. After hearing various items of Museum News from our Chairperson, Peigi, we all settled in for the pleasure of tea, coffee and biscuits, (complete with a nice selection of gluten and dairy-free goodies. Thanks, Peigi!), and lots of friendly catch-up chat. After we'd had our fill, everyone moved on to the Museum and those who hadn't yet had a chance to see the new exhibits were given a tour.

And here are some photos of these new displays, in case you hadn't the chance to visit us during the holiday weekend!

Images celebrating the wonderful world of Volunteering in Crail over the years:



And, here, some beautifully presented images of our precious Old Harbour and its history:



As mentioned above, we were opened for five days recently, from Thursday morning through to Monday afternoon. It was our first go at being open for five straight days, due to the wonderful volunteer turnout we had as a result of last year's Volunteer Tea. We now have enough people able and willing to keep the Museum open for an extra day, Monday. We will do the same for the next two Bank Holidays, in May. And then, once we open for the season in June, we will continue with our five-day opening. Such good news!

At the risk of repeating myself, I am putting out the call here – this is Crail's own amazing Museum, full of fascinating artifacts and displays celebrating your very own history! Ours is not even slightly a dusty old or dull collection of 'boring' bits and bobs! Quite the contrary! Ours is a vibrant, bright and creatively laid out collection, full of intriguing surprises. Only the other day I was talking to a visitor from Inverness, who's been coming to Crail with family for many years. They mentioned they'd been to the Museum and were so delighted, so amazed, saying they had learned so much! They were especially excited by the Railway Exhibit, not having known that the old Garden Centre, as was, had actually been the site of Crail's railway station. I wonder what memories of the comings and goings to and from that station any long time Crailers might find being stirred up were you to come in and have a gander at the Railway display!?! There's something of interest for everyone, young and old, so do yourself a favour and come on in and have a good explore...I guarantee you'll be surprised and delighted by your own discoveries as well!

Some Museum News for you – The recent opening over the holidays showed a good turnout, with 248 people coming in to have a look. And as always, we had great feedback and lots of grateful appreciation for all our hard work, both in keeping the Museum's bounty in tip top shape and for the informative and friendly offerings of our Volunteer guides. Also on Easter Sunday was the year's first Museum sponsored Guided Walk around Crail. Twelve people signed up and went along on the tour, exploring and learning about Crail's history. The museum will be offering these Guided Walks on future Sundays, over the Bank Holidays and all through the Summer, from June to October.

In other news, The Museum will be offering a series of talks between now and October. These are held in the Kirk Hall, starting at 7:30. The first one is coming up on May 3rd. Will Cresswell will be speaking about local wildlife and it promises to be an interesting evening, so do come along! You can buy tickets online, or pay at the door on the evening. All talks are £5.00.

That's all for now folks, I promise some a choice collection of pics from our many fascinating acquisitions in the next issue; hope you are beginning to be a wee bit inspired by the treasure trove that is Crail Museum! And, all fingers and toes crossed that the gorgeous Easter Sunday weather returns soon! All the best, Seana

No Wild Crail for the next 3 weeks



Meadow planting and nature reserve management day at Kilminning Sunday March 31st

Will Cresswell

Last week I spent every day wishing it would stop raining. This week I am spending it enjoying the rain (well to a degree). The difference is Sunday the 31st, when we had the most beautiful day of the year so far to sow the wildflower meadow, on the newly soil covered tarmac, at Kilminning. We obviously needed a good day to sow the seeds and to get people out. Now the seed is sown, rain is a good thing, although perhaps it could be without the need for an ark. Anyway, last Sunday over 80 people, aged from 1 to 80, turned out, including about 15 St Andrews students, the Fife Bird Club and of course, many Crail residents. The main job was to plant up the covered tarmac using local Scottish wildflower meadow seed mixes. In the end we intensively prepared about 1000 square meters of soil, and sowed seed over 7,000 square meters (that's about a football pitch). There was a lot of raking and a lot of seed to spread – 3 grams per square meter (23 kilograms in all). The wildflower seed mix has over 100 native meadow species in it, and we also sowed a good quantity of cornfield annuals (think cornflowers and poppies) to brighten up the first year as the meadow plants get established. A lot of other work was done: there was a massive litter pick, about 250 blackthorns were planted to manage access and screen the manholes, a path was dug through the car park bund to allow direct level access to the coastal path, via the shortest route, and the existing trees planted 2 years ago were restaked and cleared of grass if necessary (>90% are still alive and many look like they are thriving). Thank you to everyone that came to help, or who lent husbands and tools instead, or helped with logistics. Thank you also to Fife Bird Club for paying for the seed (over £2000 worth!)

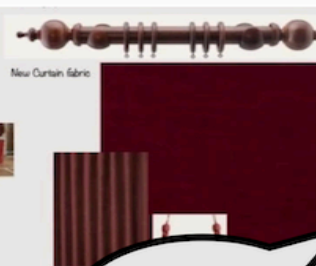
We can now look forward to a wildflower meadow later in the summer. Over the next few years, the signs of the engineering to make the wetland should disappear and nature will colonise the site, taking advantage of the new habitats that have been created. Kilminning has had a long and interesting history, but it now has an exciting future. One small bit more of Scotland has been restored for wildlife – thank you the Nature Restoration Fund and NatureScot - giving an example to other communities about what can be done, even in apparently derelict sites. But more importantly, giving a sense of hope that when we set our minds to it, we can make the environment better. Most of all, thank you Crail.



Crail Community Hall - New Curtains

by Crail Community Partnership in Crail, Fife, United Kingdom

Places where curtains are being replaced



Weddings in CCH bring income that pays our regular bills. The next improvement project is replacement curtains to enhance the CCH interior.

£5,485 giftaid + est. £453.75

£7,000 target 14 days left
78% 30 supporters

[Support Us](#)

Keep what you raise – this project will receive all pledges made by 18th April 2024 at 8:00am

14 days to go!!

[Project Facebook](#)

[Community](#)

Share



Negative Buoyancy by Aleks Scholz

Stargazing in West Braes

West Braes is one of the best places in Crail to see the southern and eastern sky. Walk down to Osborne Terrace and continue further along the coast for a few hundred metres, where the track ends and the proper coastal path begins. From here, the northern and western skies are lit up by the lights of the village and the road. But the rest of the sky is clear. In early and mid April it will be dark by ten and the moon will be gone, mostly. Not a single planet in the sky, either.

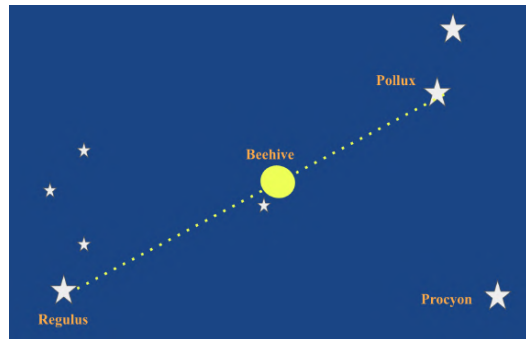
It's a great time to look along the constellation of the zodiac. If the night sky is like a foreign land, try using an sky chart app like *Heavens Above* (that's really its name) to get started. Turning towards Anstruther, the twins of Castor and Pollux will be very prominent in the south-west, forming a pair of bright stars high in the sky. That's Gemini done. Towards the south across the sea is Regulus, the brightest star in the constellation Leo. It's either the chest or the front leg of the lion, the anatomy of big cats is not my speciality. Even further towards the east, low, hovering above the Isle of May, is Spica, the brightest star in Virgo. This is pretty much the end of the zodiac for us. For Libra you need good eyes and have to stay up late. All the rest of the summer zodiac, a whole slew, is too far south: Scorpio, Sagittarius, Capricornus, Aquarius. We can talk again about Pisces and Aries in September.

In case you are missing Cancer - it's right there between Gemini and Leo, small and indistinguished, seemingly nothing to see there, just darkness. But it contains one of the most beautiful things the northern sky has to offer, and when the night is truly dark, it can be easily seen by eye. Switch the phone screen off. Then find the point that is approximately in the middle between Regulus and Pollux. Try to focus on a dark spot slightly above or below this middle point. Within the periphery of your vision should be a blurry bright milky spot. That's Praesepe, the Beehive cluster, a small town of about a thousand stars, all born six hundred million years ago, when life on Earth was still exclusively in the sea. Lichen and algae were really popular back then, as they are now obviously. Praesepe's light is 600 years old, but that's rather small fish.

This place, the western end of West Braes, is one of the darkest spots around Crail. Just give it some time. The views will come as your pupils dilate to let more light in, and the rod cells in your eyes become more and more sensitive. Avoid looking towards the road or the village. After ten or twenty minutes of just staring out in the darkness, the miracle happens. First you see outlines, then details, and then more and more stars. Humans can really see in the dark. It's an ancient survival skill, but with lights at every corner, we have forgotten how to do it.



Near Kilconquhar Loch: This does not stack up.



The Beehive looking busy through a small telescope.

This could be your space!

If you want to contribute to Crail Matters, with stories or thoughts, or better illustrations of constellations, or comments on previous stories, or pictures of litter or potholes or burns or interestingly shaped rocks, please get in touch and email us.

Tides in Crail for April 5-11

High tide happens around noon at the beginning of the week, and in late afternoon by the time the week is over. The entire long day we can sit here and watch the water coming closer and closer, wondering whether it will ever stop. It will. I think.

Weather outlook

There is no burst of spring on the horizon, but a steady progression, menacingly slow, towards double digit temperatures and, perhaps, a few days without rain. At least the sunny days seem to coincide nicely with the weekends.

Moon



Planning

Kingsbarns

Reference	Address	Proposal	Date Registered	Applicant	Agent	Comments Expiry Date
24/00628/FULL	Kingsbarns Farmhouse 3 Main Street Kingsbarns St Andrews Fife KY16 8SL	Repair and upgrade of dwellinghouse, including restoration of windows, replacement rainwater goods, re-painting facade and installation of air source heat pump (amendment to 23/03297/FULL)	26/03/2024	Mr Fergus Mackintosh Kingsbarns Farmhouse 3 Main Street Kingsbarns St Andrews Fife KY16 8SL	Ian Muir Mercat House 1 Church Street St Andrews Scotland KY16 9NW	02/05/2024
24/00629/LBC	Kingsbarns Farmhouse 3 Main Street Kingsbarns St Andrews Fife KY16 8SL	Listed Building Consent for internal alterations, repair and upgrade of dwellinghouse, including restoration of windows, replacement rainwater goods, re-painting facade and installation of air-source heat pump (Amendment to 23/03310/LBC)	26/03/2024	Mr Fergus Mackintosh 3 Main Street Kingsbarns United Kingdom KY16 8SZ	Ian Muir Mercat House 1 Church Street St Andrews Scotland KY16 9NW	02/05/2024

Royal Burgh of Crail and District

Reference	Address	Proposal	Date Registered	Applicant	Agent	Comments Expiry Date
24/00709/FULL	Upper Flat 52 High Street Crail Anstruther Fife KY10 3RB	Installation of replacement roof to rear of dwelling	27/03/2024	Mrs Margaret Campbell Upper Flat 52 High Street Crail Anstruther Fife KY10 3RB	Amy Niven c/o Stuart Niven and Son Hillwood Industrial Estate Cameron St Andrews Fife KY16 8TR	02/05/2024
24/00710/LBC	Upper Flat 52 High Street Crail Anstruther Fife KY10 3RB	Listed Building Consent for installation of replacement roof to rear of dwelling	27/03/2024	Mrs Margaret Campbell Upper Flat 52 High Street Crail Anstruther Fife KY10 3RB	Amy Niven c/o Stuart Niven and Son Hillwood Industrial Estate Cameron St Andrews Fife KY16 8TR	02/05/2024

Worship Resources

Most Holy Trinity Church on Westgate North, Crail.
Refer to web site [http:// www.stjamesparishstandrews.org.uk](http://www.stjamesparishstandrews.org.uk)Sunday Mass changed from 8.45am to 9.00am

St John's Episcopal Church, Marygate, Pittenweem.
Holy communion each Sunday at 11.30am. The church is open daily and is also a drop off point for the East Neuk Foodbank. Holy Communion led by Very Revd Dr Graham Forbes CBE

Coastline Community Church, Pittenweem.
Our morning service with Sunday school starts at 10.30am every Sunday.
All welcome!
<https://coastlinechurch.org.uk/>
Tel. 01333 312041

Kilrenny Parish Church
Sunday services are at 9.45am each week. Services are recorded, and are available on the church website, along with additional information on events.
Church Website: - <https://e-voice.org.uk/kilrenny/>

Kingsbarns Parish Church,
All are welcome at this friendly village church. Sunday services are at 10.00 am each week. For more information, please contact Rev. Wotherspoon, 07711706634, wotherspoonrig@btinternet.com

Crail Parish Church
Our interim moderator is the Revd. Nigel Robb.
Services will be at 11.30 am unless otherwise stated. Tea and coffee will be available in the Kirk Hall on Sunday 7th April prior to the service.
7th April – Revd. David Scott
14th April – Revd. David Scott
Opportunity to view extracts from a streamed service. This will take place in the Kirk Hall on Sunday 7th April at 10.30 am. Tea and Coffee will be served in the hall instead of the church on this occasion.
Chatbite – Every Wednesday in the Kirk Hall from 10.00am to 12.00pm. Come along and enjoy home baking and hospitality. Lots of books to choose your new read from too. All most welcome.
Prayer Group – Will resume on Thursday 18th April.



Spring - it's out there somewhere . Colin Morrison



St John's Lectures 2024

We are pleased to welcome

Ethel Quayle CBE

Professor of Forensic Clinical Psychology
School of Health in Social Science at the University of Edinburgh.

'Guarding Against the Shadows: Artificial Intelligence as friend or foe?'



With over 20 years of research working with sex offenders and victims, and researching technology-mediated crimes against children, Ethel Quayle brings a wealth of experience to the topic of Artificial Intelligence. Collaborating internationally with government and non-government agencies in the context of research, policy and practice, she plays an active role in a number of EU, UK Home Office and Scottish government organisations.

Friday 19th April 2024 at 7.30pm
St John's Episcopal Church, Marygate, Pittenweem

Please reserve free tickets by email:
lectures.stjohns@eastneuk-episcopal.co.uk
All welcome/Refreshments

St John's Episcopal Church is a registered Charity No SC010982



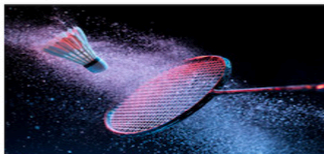
Concert

Liz Jones & Broken Windows

Saturday, 25th May 2024 - 8 pm
Crail Community Hall - BYOB

Tickets £14
through
www.crailcommunityhall.co.uk

East Neuk Badminton Club



Practice Badminton Skills, Play games, Fitness, Friends, and Fun
Then join us at **Waid Academy – McArthur Sports Hall on Mondays**
Times: 6.45pm to 7.45pm age group P4 – P7
7.45pm to 8.45pm age group S1 – S6
Block Dates: 22nd April to 20th May 3-week block - Cost £11
27th May to 17th June 4-week block - Cost £15

JOIN US ON MONDAY 22nd APRIL FOR A FREE TRIAL

For more information contact Liz Clark 07967 686084
or
Email Lizmplark@gmail.com



PO High Street South
Monday 1400-1545, Tuesday 1400-1545, Wednesday 1400-1545

Bank - Marketgate Crail
Thursday 1100-1130

Library - Marketgate Crail
Thursday 1000 - 1045 fortnightly

Coastline Friendship Club

All welcome for a bowl of soup,
a cuppa and a blether!

Meets every fortnight on a Friday
11.30-1.30pm, Crail Community Hall
Next dates: 16 Feb, 1 & 15 Mar, 12 & 26 Apr



Coastline Community Church
Charity no. SC052258
01333 312041
www.coastlinechurch.org.uk

Brown bin collection dates in Fife will revert to normal 11 March. Online collection calendars have been updated, so please check yours to confirm your next scheduled collection here: www.fife.gov.uk/bincalendar
For more information on recycling and what can be recycled in your brown bins, visit:
<https://link.eastne.uk/bins>

Crail Collection

April 10 Brown and Blue bins
April 17 Grey bin

Kingsbarns Collection

April 16 Brown and Blue bins
April 23 Grey bin

DO YOU HAVE AN INTEREST
IN THEATRE?
WOULD YOU LIKE TO APPEAR
ON STAGE OR
ASSIST BACKSTAGE?
DO YOU HAVE SOME FREE
TIME TO SPARE?

IF SO, THE ST ANDREWS PLAY
CLUB WOULD LOVE TO HEAR
FROM YOU!



THE ST
ANDREWS
PLAY CLUB
NEEDS YOU!

CONTACT US BY EMAIL:
standrewsplayclub@outlook.com

WE HOLD EVENTS THROUGHOUT THE YEAR AND OUR MAIN
PRODUCTION TAKES PLACE IN THE BYRE
IN NOVEMBER

ANSTRUTHER PHILHARMONIC SOCIETY SPRING CONCERT

Saturday 6th April 2024 7.30pm



MOZART
Coronation Mass

VAUGHAN WILLIAMS
Five Mystical Songs
featuring Scottish Opera Soloist



Tickets £12
from choir members or on the door

St Ayle Church
School Green
Anstruther
KY10 3HF




Come to explore

Kingsbarns Spring Gardens

SATURDAY 6TH APRIL
2.00- 4.30 PM

Tickets & map £4.00
from the Memorial Hall

Teas for a donation to church funds
Please bring cash

Hosted by Kingsbarns Parish Church: Charity no. SCO12192

PITTENWEEM COMMUNITY LIBRARY AND INFORMATION CENTRE

SPRING 2024 EVENING TALKS AN EVENING WITH JAMES OSWALD

Best-selling crime novelist and Fife farmer



THURSDAY 11 APRIL
Doors open 7pm, talk starts 7.30pm
Tea and biscuits included in the ticket price

Coastline Community Church
21 Session Street, Pittenweem KY10 2QL

Tickets: £6 available from the Library
Opening hours: Mon & Wed 2-5pm; Fri & Sat 10am-1pm

Pittenweem Library Cove Wynd, Pittenweem KY10 2LE
WEB: pittenweemlibrary.org.uk EMAIL: library@pittcllc.org.uk
FACEBOOK: @pittcllc

Scottish Charitable Incorporated Organisation – Charity number SCO47013

Remembering Together is a project to co-create memorials which will honour the people we have lost, mark what has been lost and changed in our lives, and preserve the best of what we have learned and created together during the Covid pandemic. We are working with communities across Scotland to co-create Remembering Together.

Covid touches, and continues to affect, everyone in Scotland, and across the world. Coming together now and through 2023 and into 2024 gives us some space to pause, to reflect and to consider all that has happened and is still happening. Remembering Together will support many ways of being together in and remembering these months and years. We will remember those lost, remember that we are all touched by this experience, and remember that for many who were experiencing inequality already, the impact is deeper. This project is also about remembering and reconnecting with each other after periods of isolation while remembering that Covid is not over yet - this is a time of continuing change. Remembering Together will also acknowledge and embody the ways in which communities continue to support one another.

Workshops

April 9 Crail Community Hall 1.30-4.00pm
 April 13 Cambo Gardens 11.00am to 3.00pm

Scottish Fisheries Museum, Anstruther 100 Species

29 March 2024 - 20 June 2024
 Curated and presented by Edinburgh Shoreline, the 100 Species Exhibition celebrates the life that thrives on our coast and in our seas. It takes viewers on a journey from the skies above, to the shore, through the inter-tidal zone, before finally taking a deep dive under the waves.



2024 SEASON EVENING TALKS

Friday 3rd May

The Birds of Crail a talk by Prof Will Cresswell

Friday 21st June

Determined Women: The History of Women's Golf 1738 - 1929
 By Hannah Fleming, R&A Golf Museum, St. Andrews

Friday 12th July

The Witches of Crail and the East Neuk
 By Sheila Gaul, founder member of R.A.W.S.

Wednesday 31st July

The History of the Crail Sea Boxes
 By Kelsey Williams

Friday 20th September

James Oswald, Musician - From Crail to the Court of King George 3rd
 by Tom Davidson

Doors open 7pm start 7.30pm

Crail Kirk Hall
 Marketgate, Crail
 KY10 3TL

Tickets £5, includes light refreshments, available from www.crailmuseum.uk, from the Museum Shop or on the door

Scottish Charitable Incorporated Organisation (SCO23505)

PITTENWEEM COMMUNITY LIBRARY AND INFORMATION CENTRE

SPRING 2024 EVENING TALKS

Thursday 11 APRIL

AN EVENING WITH JAMES OSWALD

James Oswald, best-selling crime writer and Fife farmer

Thursday 25 APRIL

CONVERSATIONS WITH JOAN

THE ILLUSTRATED STORY OF THE VIRTUAL COMPLETION OF JOAN EARDLEY'S *TWO CHILDREN* AND OTHER WORKS

Kate Downie, RSA

Thursday 9 MAY

WHO WAS ANDREW CARNEGIE?

Sharron McColl, Dunfermline Carnegie Library

Thursday 23 MAY

ROOTING FOR A BETTER FUTURE

Claire Pollock and Nikki Storrar, Ardross Farm

Doors open 7pm, talks start 7.30pm

Coastline Community Church

21 Session Street, Pittenweem KY10 2QL

Tickets: £6 available from the Pop-up Library, 47 High Street, Pittenweem, Wed 2-5pm or by emailing library@pittcllc.org.uk until the Library reopens

Scottish Charitable Incorporated Organisation – Charity number SC047013

Crail Matters Donations

We currently have a circulation of our digital newspaper of well over 1,000 and we print around 40 copies per week: we have approximately 64 regular contributors - just a small increase in the numbers who regularly donate would make a big difference. So.... a huge thanks to those who do donate because you keep Crail Matters going, and a request to those who don't - please do! Should you wish to make a donation however small, here are our details:

Crab Publishing Bank Details

Payee: Crab Publishing
Royal Bank of Scotland
Sort Code: 83-26-28
A/c No.: 15518709

Alternatively, by cheque to:

Crab Publishing
1 Fife Ness
Crail
Fife KY10 3XN

If you go to our web site www.crailmatters.com there is a secure link for online donations using a credit card. You can also sign up there to receive Crail Matters.

Crail Harbour. *Colin Morrison*

Crail's harbour is owned and operated by Fife Council and is a unique example of a mediaeval harbour therefore is Category A listed. Frequently it features in 'best of' lists for tourists to visit and just recently Crail was given the plaudit "Gorgeous fishing village with a stunning harbour" in a national newspaper. Unfortunately all these accolades about its iconic status and general loveliness whilst evidently true, especially from the West Braes, dissipate if you stand on the quayside, take off the rose tinted sunglasses and have a close look at its general condition - messy and crumbling.

Yes, it's a working harbour and of course that comes with inherent workaday messiness - creels, ropes, buoys and all kinds of seafaring apparatus spread about the quayside is to be expected. And, to many that adds immensely to its charm with many a visitor or resident regularly coming down to take in the atmospheric surroundings and watch the lobster fishers in action.

However, when you trip on a loose stone on the slipway or see the piles of rubbish on the quayside the reality of the harbour is suddenly apparent. The small number of boats reflects the current low level of commercial fishing with the number of active boats declining as the attractiveness of the industry is impacted by ever evolving regulation. The young are not replacing the retirees and many are selling up their catch licenses. This means impetus for Fife Council to enhance the facilities is just not there and as maintenance is also impacted by Fife Council's manpower shortages and budget constraints, the patina of industry starts to look a bit more like neglect than charm. In addition, refuse and detritus from whatever source, is not being regularly cleared away and some of it has been lying for many months. For example pieces of the boat that slipped its moorings and was broken up on the harbour beach during storm Babet are still lying on, in and outside the harbour. Visitor parking at the limited number of places

Oh I like it. It was spotted by my good friend, the great crested grebe, in Inverbervie.



A seagull quotation from the BBC - "*When we see behaviours we think of as*

mischievous or criminal - almost, we're seeing a really clever bird implementing very intelligent behaviour," said Prof Paul Graham of the University of Sussex. "*I think we need to learn how to live with them.*" What a fine chap this Prof Graham must be - he understands seagulls very well. And here's another: "*They're very charismatic creatures and definitely get a bad rap for sometimes aggressive behaviour in the breeding season,*" said Emma Caulfield, who runs The Winter Gull Survey (WinGS). "*But they are part of our natural world and they're just taking advantage of the hand that's been dealt them.*" I invited Emma and Paul to come out to Fluke Dub and discuss this seriously with me - they haven't replied yet, but I'm sure they will - I am after all very charismatic (not too sure what that means, but I definitely am).

on the quayside is often problematic (despite the 'No Public Parking' sign on Shoregate) and can be a source of conflict when inconsiderate drivers block access to the quayside for the fishers).

The harbour is also the gateway to the harbour beach. This lovely cliff backed sandy beach is popular as a recreational facility for the community and visitors. To get there everyone has to pass along the quayside and go down the crumbling slipway. Note: providing facilities for recreational beach users, cleaning the beach etc. is not within the remit of the Fife Council Harbours department. Thankfully, Fife Coast and Countryside Trust come along and do a bit of clean up on the beach from time to time.

These issues were raised at the most recent Crail Community Council meeting and it was agreed to form a working group to review and report on the current unsatisfactoriness of not only the harbour in general but also the overall importance of the harbour and the beach as an integral and fundamental amenity to Crail's community and its visitors. The objective is to resolve the issues, enhance the harbour and beach to an attractive and fully functioning recreational facility properly reflecting its iconic reputation and ultimately develop it as a major tourist attraction - with a working harbour.



Material for inclusion in Crail Matters should be sent to crailmatters@gmail.com and received on Wednesday 5.00pm for publication in Friday issue. Any views expressed in articles or Letters to the Editor are those of the author, and not of Crail Matters. We reserve the right to edit copy for length and style. Submission does not guarantee inclusion. © Crab Publishing 2024: Editorial Team: Julie Middleton, Isla Reid, Max Taylor,, Peter Salkeld, Valencia Sowry. Phone contact 07517964273. We are regulated by IMPRESS, but initial complaints must be made to us. You can view our complaints procedure at crailmatters.com. Address for correspondence : Crail Matters Editorial Office, Crail Town Hall, Crail KY10 3UH

